

PTL

DOK. SPEKTAKUL NR 76

A

Muzyka

do

sztuki S. Zeromskiego

„Róża”

Partytura i Głosy

ARCHIWUM  
P. TEATRU LUDOWEGO  
W NOWEJ HUCIE

Nr poz. \_\_\_\_\_

106/388

1968



A 4 16 III. PN-57 P-94020  
Wzór Nr. 181

Cena zł. 2,70

Dolnośląskie Zakłady  
Wyrobow Papierowych  
Jelenia Góra  
A 4 16 III. PN-57/P-94020  
Wzór Nr. 181

Cena 2,70 zł.

Violino

№ 11 Obraz III - bal

verte!

ARCHIWUM  
P. TEATRU LUDOWEGO  
W NOWEJ HUCIE

Nr poz. ....

Handwritten musical notation on a single staff, starting with a treble clef and a key signature of one sharp (F#). The notation includes various rhythmic values and dynamic markings, with *pp* written at the beginning.

Handwritten musical notation on a single staff, continuing the piece. It features a variety of rhythmic patterns and includes the dynamic markings *poco* and *piu*.

Handwritten musical notation on a single staff, featuring a *crescendo* marking and a *ff* dynamic marking. A horizontal line with a hairpin symbol indicates the crescendo.

Handwritten musical notation on a single staff, consisting of a series of chords and rhythmic figures.

Handwritten musical notation on a single staff, showing a melodic line with various rhythmic values and accents.

Handwritten musical notation on a single staff, featuring a series of chords with fingerings 2, 4, 5, 6, and 7 indicated above the notes.

Handwritten musical notation on a single staff, including chords and a double bar line with repeat signs. Fingerings 8 and 9 are indicated above the notes.

Handwritten musical notation on a single staff, featuring chords and a double bar line with a '2' marking, possibly indicating a second ending.

Handwritten musical notation on a single staff, ending with a double bar line and the word *Fine*.

Four empty musical staves at the bottom of the page, providing space for further notation.

Trba B I - II (76) Obraz III - bal

76 *mp* *f* *Solo*

25 15 *p* *ff*

2x *ff* *ff* *Fine*

ARCHIWUM  
P. TEATRU LUBOWEGO  
W NOWEJ HUCIE

Nr poz. ....

Violoncello

№ 11

Obrax III - bal

Handwritten musical notation for the first staff, featuring a bass clef, a 3/4 time signature, and a series of chords and notes.

Handwritten musical notation for the second staff, continuing the piece with various rhythmic values and accidentals.

Handwritten musical notation for the third staff, marked with the word "simile" at the beginning.

Handwritten musical notation for the fourth staff, including a first ending bracket and dynamic markings.

Handwritten musical notation for the fifth staff, showing a melodic line with frequent accidentals.

Handwritten musical notation for the sixth staff, featuring a steady rhythmic pattern.

Handwritten musical notation for the seventh staff, with complex chordal textures.

Handwritten musical notation for the eighth staff, continuing the melodic and harmonic development.

Handwritten musical notation for the ninth staff, featuring a melodic line with a fermata.

Handwritten musical notation for the tenth staff, marked with a forte "f" dynamic.

Handwritten musical notation for the eleventh staff, with intricate rhythmic patterns.

Handwritten musical notation for the twelfth staff, showing a melodic line with various dynamics.

Handwritten musical notation for the thirteenth staff, marked with a forte "f" dynamic and ending with "p sub."

Handwritten musical notation for the fourteenth staff, concluding the piece with a double bar line and a "6x" marking.

Handwritten musical score on seven staves. The notation includes various note values, rests, and dynamic markings such as *ff* and *f*. The piece concludes with a double bar line and the word *Fine*.



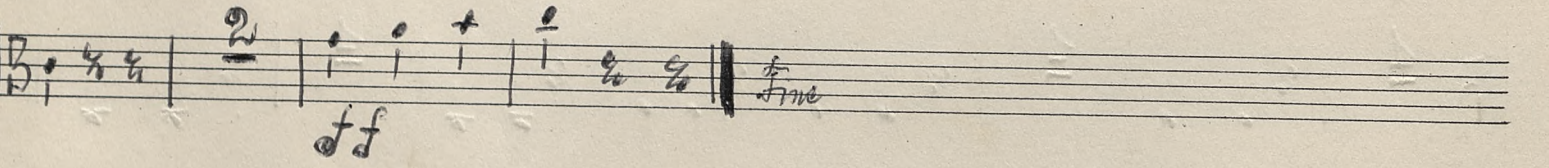
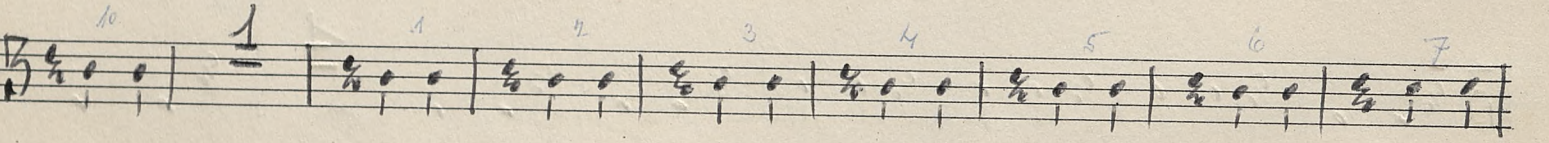
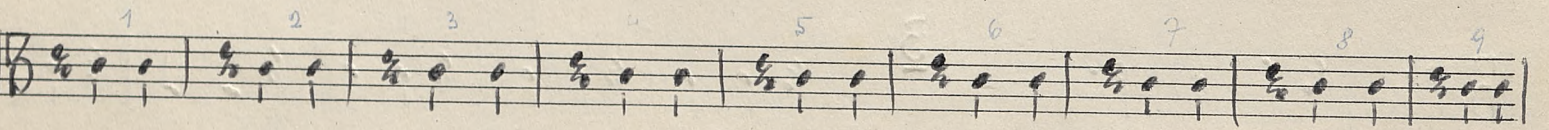
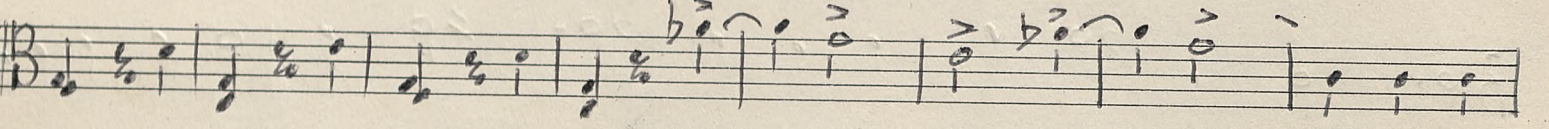
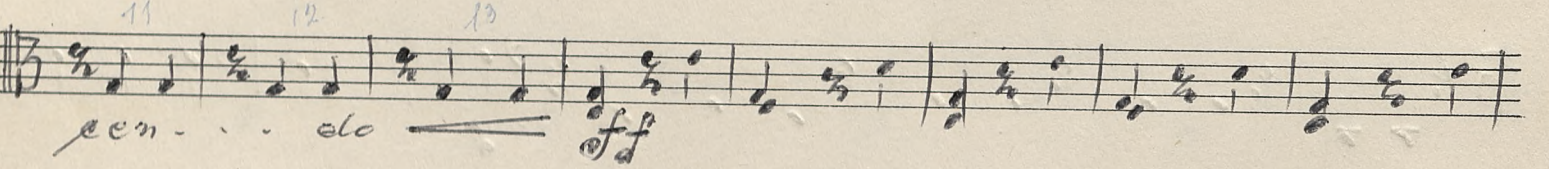
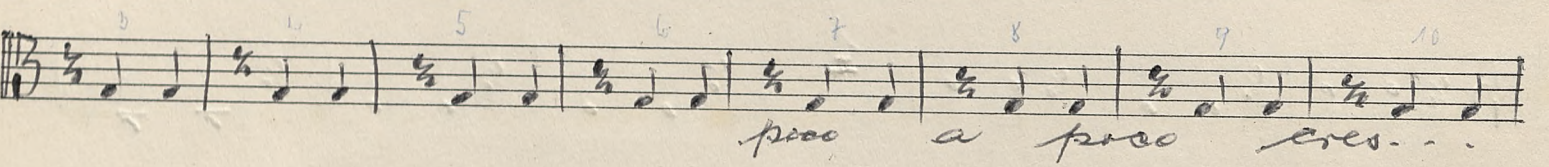
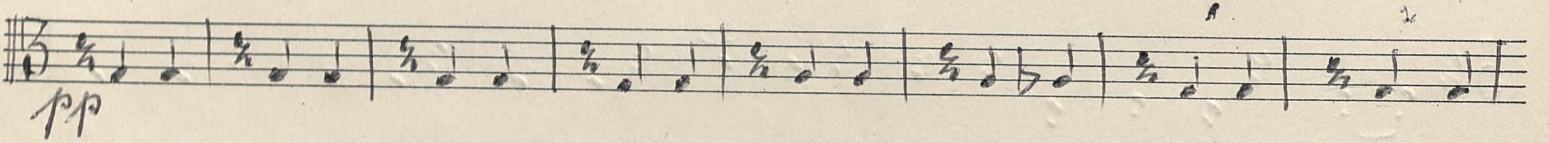
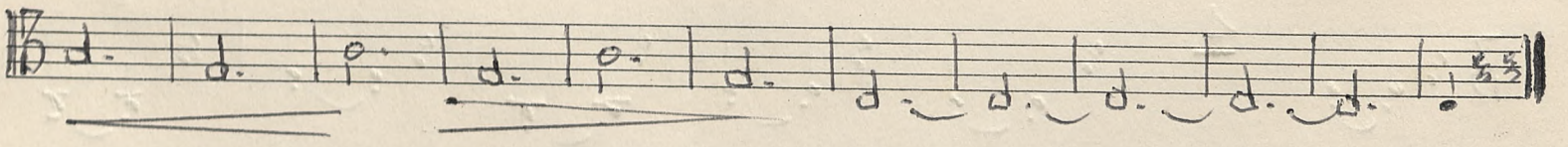
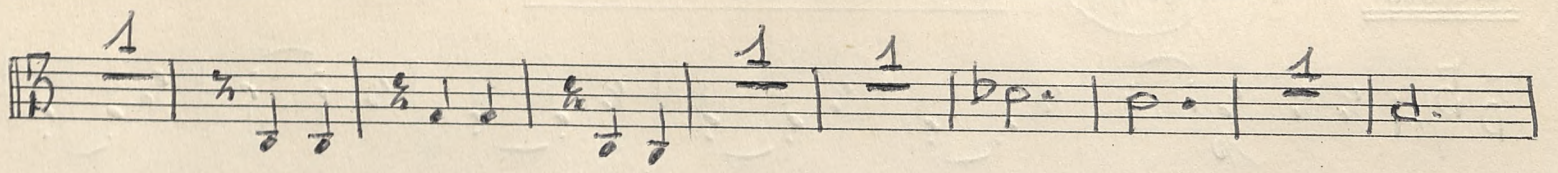
Viola

№ 11

Obraz III - bal

Handwritten musical score for Viola, Op. 11, No. 11, 'Obraz III - bal'. The score consists of 14 staves of music. It begins with a treble clef and a 3/4 time signature. The notation includes various note values, rests, and dynamic markings such as 'p', 'mf', and 'simile'. There are also performance instructions like '1' and '3' above certain notes. The piece concludes with the word 'verte!' written at the bottom right of the page.

verte!



ARCHIWUM  
P. TEATRU LUDOWEGO  
W NOWEJ HUCIE  
Nr poz. \_\_\_\_\_

Tamb.

**N<sup>o</sup> 1**

4/4 *ff* 3/4 4

7/8 1 5/4 5 4/4 4 3/4 1 8 *f*

12

**N<sup>o</sup> 2**

4/4 *ff* 3

5 5

3

5 5 3 3

3 *mp.*

15

**N<sup>o</sup> 3**

4/4 *f* 3

**N<sup>o</sup> 4 = N<sup>o</sup> 2**

**N<sup>o</sup> 5**

4/4 *f* 3 7/8 1 5/4 2 4/4

*fff*

10

**Nr 6 i 7** *tacet!* / *Spiew Solo* /

**Nr 8**

4/4 **4**

**Nr 9**

3/4 **3 4** **3**

**Nr 10** *skreslony!*

**Nr 11** = *zocale*

**Nr 12** *skreslony!*

**Nr 13**  
**Nr 14** *tacet!*

**Nr 15**

4/4 2/4 3/4

**4** **3**

**3**

**Nr 16** = **Nr 5**

**Nr 17** = **Nr 1**

11

7

29

Violoncello

N° 1

Tamb. Solo

1 1 1

5/4 3 4/4 5 3/4 1 4/4 8 Fine

N° 2

tacet!

N° 3

tacet!

N° 4

tacet!

N° 5

N° 6 i 7

tacet! / spicco solo /

N° 8

tacet!

N° 9

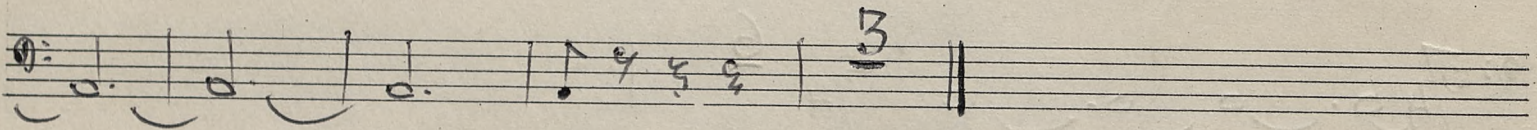
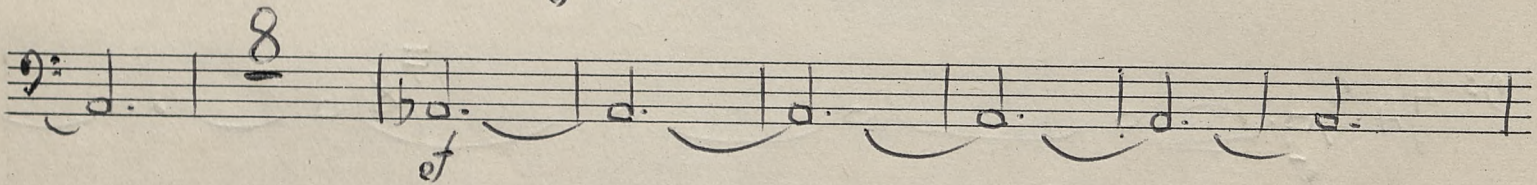
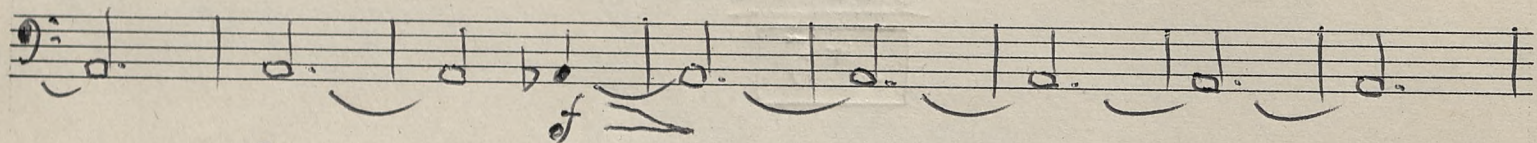
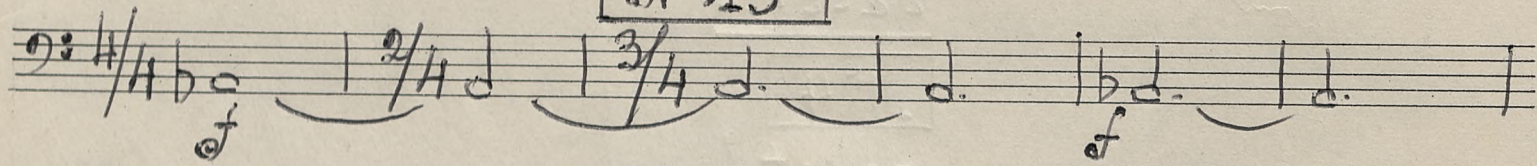
**Nr 10** skreslony!

**Nr 11** = wale!

**Nr 12** skreslony!

**Nr 13, 14** tacet!

**Nr 15**



27

**Nr 16** = **Nr 5** tacet!

**Nr 17** = **Nr 4**

ARCHIWUM  
P. TEATRU LUDOWEGO  
W NOWEJ HUCIE

Nr poz. ~~.....~~

8

2  $\frac{4}{4}$  - |  $\frac{3}{4}$  - |  $\frac{4}{4}$  - | - |  $\frac{7}{8}$  - |  $\frac{5}{4}$  -

1 1 1 4 1 2

3  $\frac{4}{4}$  - |  $\frac{3}{4}$  - |  $\frac{4}{4}$  - | - |  $\frac{7}{8}$  - |  $\frac{5}{4}$  -

*ve. i spien*

2  $\frac{4}{4}$  - |  $\frac{3}{4}$  - |  $\frac{4}{4}$  - |  $\frac{7}{8}$  - |  $\frac{5}{4}$  -

1 4 *f*  $\frac{3}{4}$

3  $\frac{4}{4}$  - |  $\frac{3}{4}$  - |  $\frac{4}{4}$  - |  $\frac{7}{8}$  - |  $\frac{5}{4}$  -

*f*

2  $\frac{4}{4}$  - |  $\frac{3}{4}$  - |  $\frac{4}{4}$  - |  $\frac{7}{8}$  - |  $\frac{5}{4}$  -

7

3  $\frac{4}{4}$  - |  $\frac{3}{4}$  - |  $\frac{4}{4}$  - |  $\frac{7}{8}$  - |  $\frac{5}{4}$  -

28

**№ 2**

tacet!

**№ 3**

tacet!

**№ 4**

tacet!

**№ 5**

2  $\frac{4}{4}$   $\frac{3}{4}$  - | - |  $\frac{7}{8}$  - |  $\frac{5}{4}$  - |  $\frac{4}{4}$

3 3 1 2

3  $\frac{4}{4}$   $\frac{3}{4}$  - | - |  $\frac{7}{8}$  - |  $\frac{5}{4}$  - |  $\frac{4}{4}$

*verte!*

senza sord.

2 *ff*

Handwritten musical notation for staff 2, first system. It begins with a treble clef and a 4/4 time signature. The music consists of a series of eighth notes, starting with a dynamic marking of *ff*.

3 *ff*

Handwritten musical notation for staff 3, first system. It begins with a treble clef and a 4/4 time signature. The music consists of a series of eighth notes, starting with a dynamic marking of *ff*.

2 *ff*

Handwritten musical notation for staff 2, second system. It continues with eighth notes and ends with a fermata. A dynamic marking of *ff* is present. A first ending bracket is shown below the staff.

3 *ff*

Handwritten musical notation for staff 3, second system. It continues with eighth notes and ends with a fermata. A dynamic marking of *ff* is present. A first ending bracket is shown below the staff.

**Nr 6 i 7** tacet! / spiewo solo

**Nr 8**

2 *ff*

Handwritten musical notation for staff 2, third system. It begins with a treble clef and a 4/4 time signature. The music consists of eighth notes with triplets. A dynamic marking of *ff* is present.

3 *ff*

Handwritten musical notation for staff 3, third system. It begins with a treble clef and a 4/4 time signature. The music consists of eighth notes with triplets. A dynamic marking of *ff* is present.

2 *ff*

Handwritten musical notation for staff 2, fourth system. It continues with eighth notes and triplets. A dynamic marking of *ff* is present.

3 *ff*

Handwritten musical notation for staff 3, fourth system. It continues with eighth notes and triplets. A dynamic marking of *ff* is present.

2 *ff*

Handwritten musical notation for staff 2, fifth system. It shows a first ending bracket and a dynamic marking of *ff*.

3 *ff*

Handwritten musical notation for staff 3, fifth system. It shows a first ending bracket and a dynamic marking of *ff*.



**Nr 9**

Tib. 3 tacet!

**Fib 2**  $\frac{3}{4}$  <sup>24</sup>

**Nr 10** skreslony!

**Nr 11** walc!

**Nr 12** skreslony!

**Nr 13 i Nr 14** tacet!

**Nr 15**

2  $\frac{4}{4}$  -  $\frac{2}{4}$  -  $\frac{3}{4}$  -  $f$  sen sord.  $p$

3  $\frac{4}{4}$  -  $\frac{2}{4}$  -  $\frac{3}{4}$  -  $f$  sen sord.  $p$

**Nr 16 = Nr 5**

**Nr 17 = Nr 1**

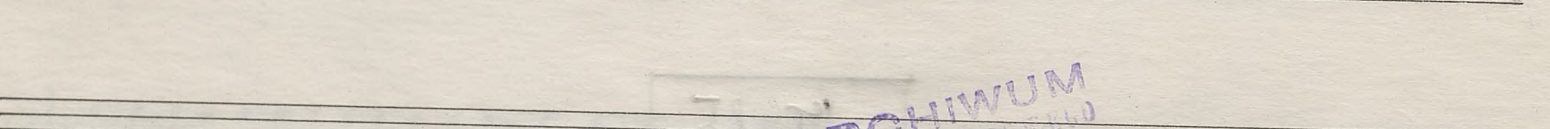
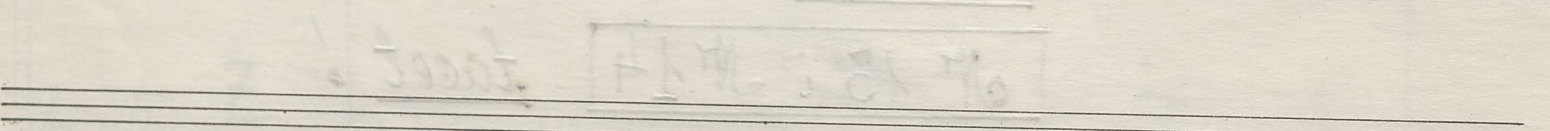
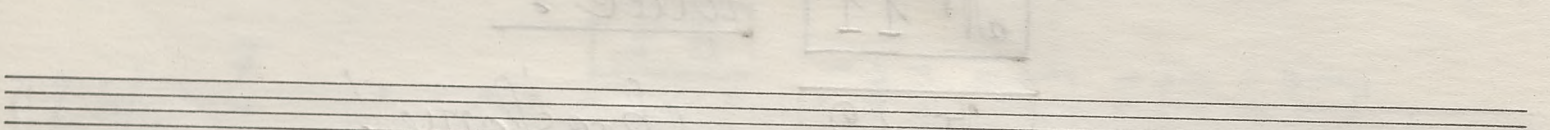
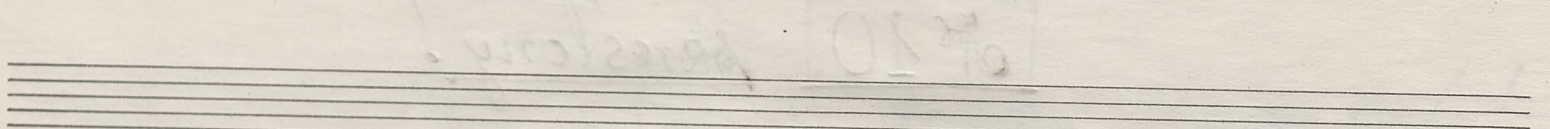
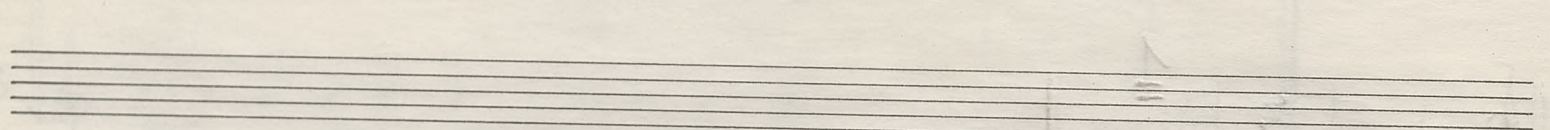
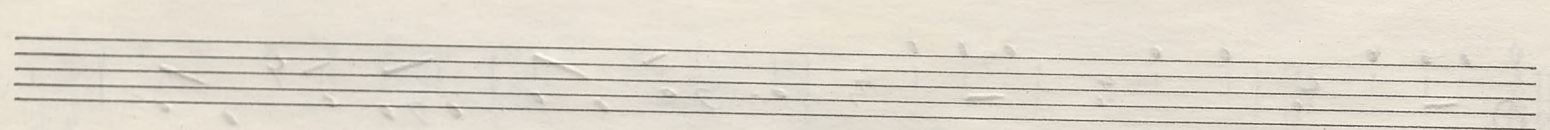
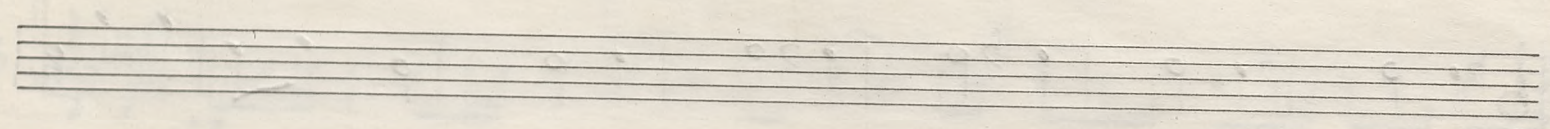
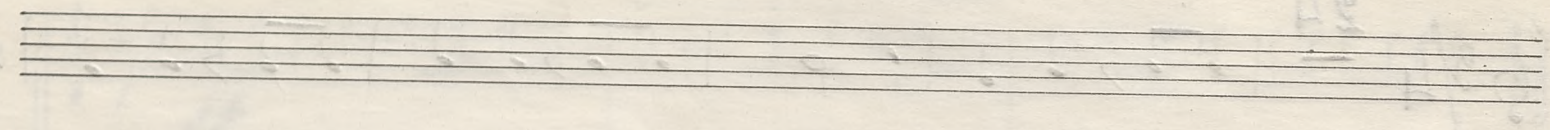
2  $\frac{7}{4}$   $f$  **6**

3  $\frac{7}{4}$   $f$

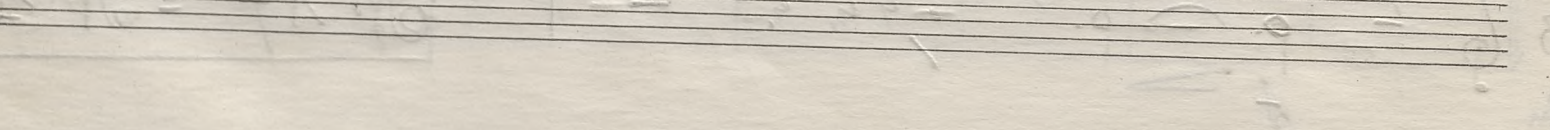
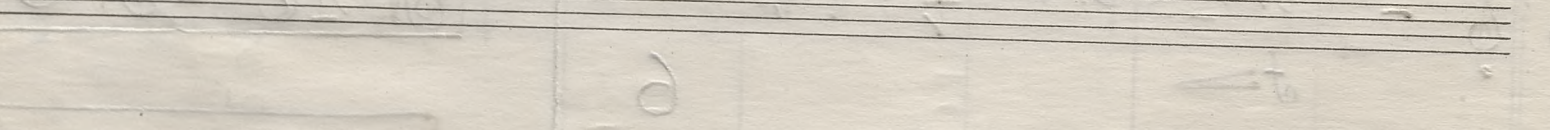
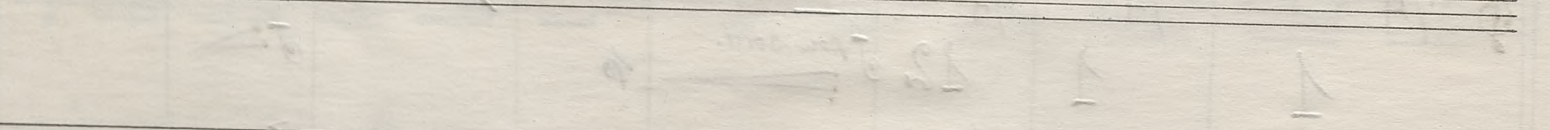
Op. 10

Op. 10

Op. 10



ARCHIWUM  
P. TRATY  
1910



Prta B 1

Nr 1

*Tamb. Solo*

*con sord.*

Handwritten musical score for Nr 1, featuring three staves. The first staff has time signatures 4/4, 3/4, 4/4, 7/8, and 5/4. The second staff continues with 4/4 and 3/4. The third staff ends with a double bar line. Dynamic markings include *p* and *ff*. The piece concludes with *con sord.*

Nr 2

*tacet!*

Nr 3

*tacet!*

Nr 4

*tacet!*

Nr 5

*senza sord.*

*ff*

Handwritten musical score for Nr 5, featuring three staves. The first staff has time signatures 4/4, 7/8, and 5/4. The second and third staves contain rhythmic patterns. Dynamic markings include *ff*. The piece concludes with *senza sord.*

Nr 8

Nr 6 i 7 *tacet! / spiccato Solo /*

Handwritten musical score for Nr 6 i 7, featuring three staves with complex rhythmic patterns. Dynamic markings include *p* and *ff*. The piece concludes with *forte!*

**Nr 9**

Handwritten musical score for piece Nr 9. It consists of seven staves of music in treble clef with a 3/4 time signature. The first staff includes the tempo marking "ce." and the number "11". The music features various rhythmic patterns, including eighth and sixteenth notes, and rests. The key signature has one sharp (F#).

**Nr 10** skreślony!

**Nr 11** = walc!

**Nr 12** skreślony!

**Nr 13** i **Nr 14** tacet!

**Nr 15**

Handwritten musical score for piece Nr 15. It consists of two staves of music in treble clef. The first staff has three time signatures: 4/4, 2/4, and 3/4. The second staff includes dynamic markings: *con sord.*, *f*, and *p*. The music features various rhythmic patterns and rests.

**Nr 16** = **Nr 5**

**Nr 17** = **Nr 1**

P. TRATKO LUDWIK  
W NOWEJ HUCE

№ poz. \_\_\_\_\_

Clarinetto 31-2

**Nr 1-6** tacet!

**Nr 7**

1  $\frac{3}{4}$  - C -  $\frac{3}{4}$  <sup>257</sup> *pp*

2  $\frac{3}{4}$  - C -  $\frac{3}{4}$  - *pp*

22 3

1 *pp*

2

1

2

1

2

ARCHIWUM  
P. TEATRU LUDOWEGO  
W NOWEJ HUCIE

Nr poz. \_\_\_\_\_

40

**Nr 8**

cl. 1:2  $\frac{4}{4}$  *st*

1  $\frac{4}{4}$  **7**

**Nr 9**

cl. 1  $\frac{3}{4}$

**30**

13

- wfn 12
- Nr 10** skreślony!
  - Nr 12** skreślony!
  - Nr 15** tacet!
  - Nr 11** = wale!
  - Nr 13-14** tacet!
  - Nr 16** = Nr 5
  - Nr 17** = Nr 1 tacet!

Violino

Nr 1 - 8 tacet!

Nr 9

Nr 10 skreilony!

Nr 11 coale!

Nr 12, 13, 14, 15, 16, 17

tacet!

**ARCHIWUM**  
 P. TEATRU LUDOWEGO  
 W NOWEJ HUCIE  
 Nr poz. \_\_\_\_\_

Pianoforte

Nr 1 - 4 tacet!

Nr 5

Musical notation for Nr 5, measures 1-4. Treble and bass staves. Time signatures: 4/4, 7/8, 5/4, 4/4. Dynamics: sf.

Musical notation for Nr 5, measures 5-8. Treble and bass staves. Dynamics: sff.

Nr 6 : 7 tacet! / spiew solo /

Nr 8

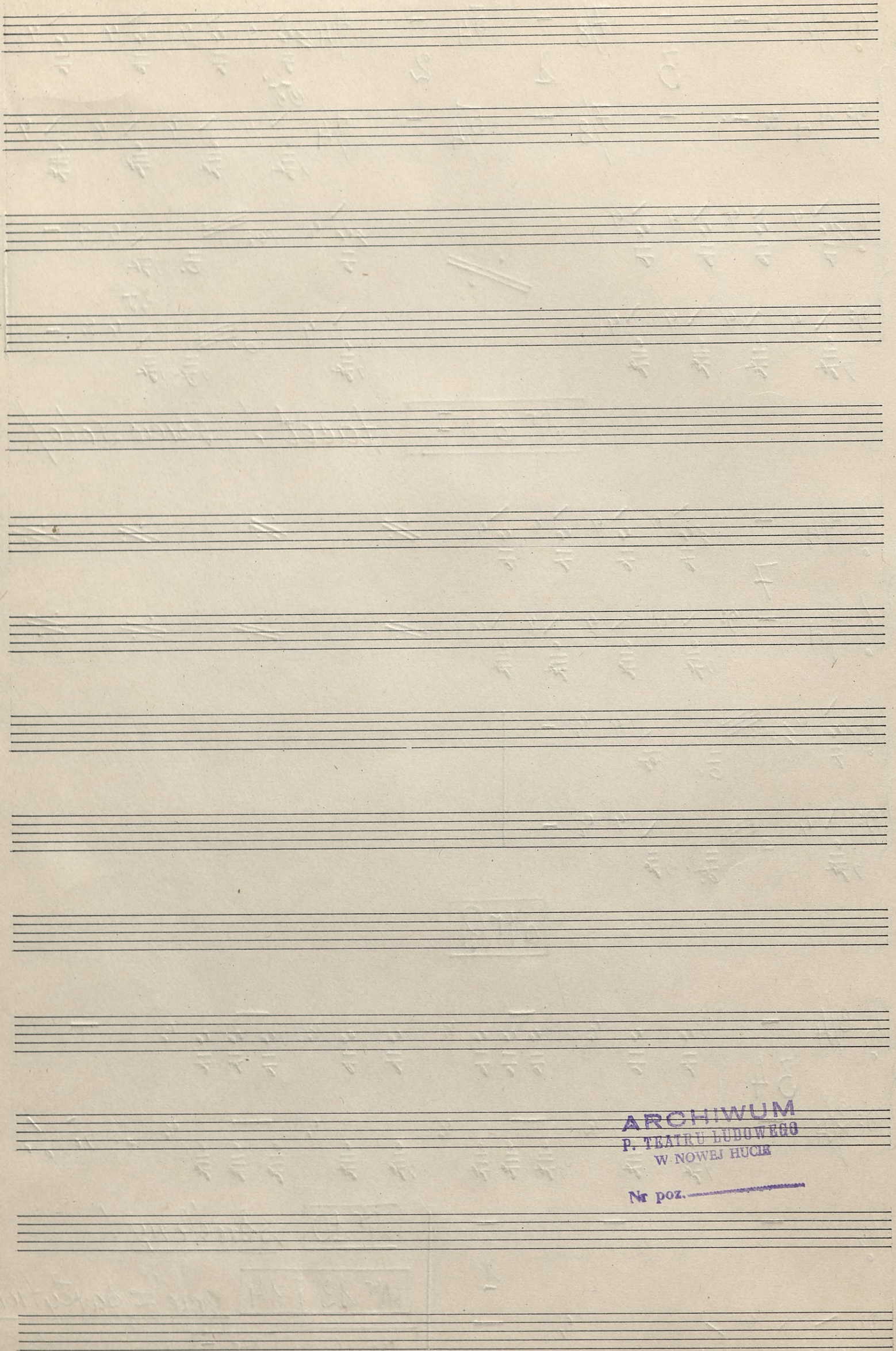
Musical notation for Nr 8, measures 1-4. Treble and bass staves. Dynamics: sf.

Musical notation for Nr 8, measures 5-8. Treble and bass staves. Dynamics: sff.

Nr 9

Musical notation for Nr 9, measures 1-4. Treble and bass staves. Time signature: 3/4. Dynamics: sf.

Musical notation for Nr 10, Nr 13-14, and Nr 16. Treble and bass staves. Dynamics: skreslony, grac' z partytury.



**ARCHIWUM**  
**P. TEATRU LUDOWEGO**  
**W NOWEJ Hucie**

Nr poz. ....



Viola

Nr 1 - Nr 8 tacet!

Nr 9

1 2 3 4 5 6 7 8  
9 10 11 12 13 14 15 16 17  
18 19 20 21 22 23 24 25 26  
27 28 29 30 31 32 33 34

trem.

35

Nr 10 skreslony!

Nr 11 loale!

tacet al fine!

ARCHIWUM  
P. TEATRU LUDOWEGO  
W NOWES HUCIE

Nr poz. \_\_\_\_\_

Clarineti I-II in B (Nr 11) Obraz III - bal

I *p*

II

I

II

I

II

I *pp*

II

I

II

I

II

I

II

I *12* *f*

II *12* *f*

I *4*

II *4*

I *p sub.*

II *p sub.*

I

II

I

II

I *pp*

II

I

II

I *poco a poco crescen...*

II

I *do... ff*

II

I

II

I 1 2 3 4 5 6 7

II 1 2 3 4 5 6 7

I 8 9 10

II 2 3 4

I 11 12 13 14 15

II 4 5

I *Fine*

II

ARCHIWUM  
P. TEATRU LUDOWEGO  
W NOWEJ HUCIE

Nr poz. \_\_\_\_\_

Tambo.

(№ 11)

Obraz III - bal

Handwritten musical score for Tambourine. The score is written on a single staff with a 3/4 time signature. It begins with a tempo marking of 76. The music consists of a series of chords, many of which are numbered from 1 to 36. There are two measures marked with the number 19. The piece concludes with a double bar line and the word "Fine". Dynamic markings include *p* and *ff*.

AROHIMUM  
P. ZHAROV LUDMILA  
M. NOVAK HUKA  
NK Department

ARCHIWUM  
P. TEATRU LUDOWEGO  
W NOWEJ HUCIE

Nr poz. ....

Opera włoska /objętość/

partytury muzycznej K. Allegra  
do sztuki Zeromskiego "Róża"

Nr 1	---	taktów	27
Nr 2	---	"	15
Nr 3	---	"	4
Nr 4 = Nr 2	---	"	---
Nr 5	---	"	13
Nr 6 /śpiew solo/	---	taktów	46
Nr 7 /śpiew solo/	}	"	17
Nr 7 /instrument/		26	
Nr 8	---		14
Nr 9	---		42
Nr 10	---		4
Nr 11	---		191
Nr 12	---		9
Nr 13 } /śpiew z akord/	}		taktów 16
Nr 14 }			
Nr 15	---		59
Nr 16 = Nr 5	---		---
Nr 17 = Nr 1	---		---

Róża --- 404 --- 63 --- 16  
 instr. do 9                      śpiew solo                      śpiew + akord

Kraków, 10 maja 1968

Całna objętość partytury  
taktów 483                      Günter Grainger

ARCHIWUM  
P. TEATRU LUDOWEGO  
W NOWEJ HUCIE

Nr poz. \_\_\_\_\_