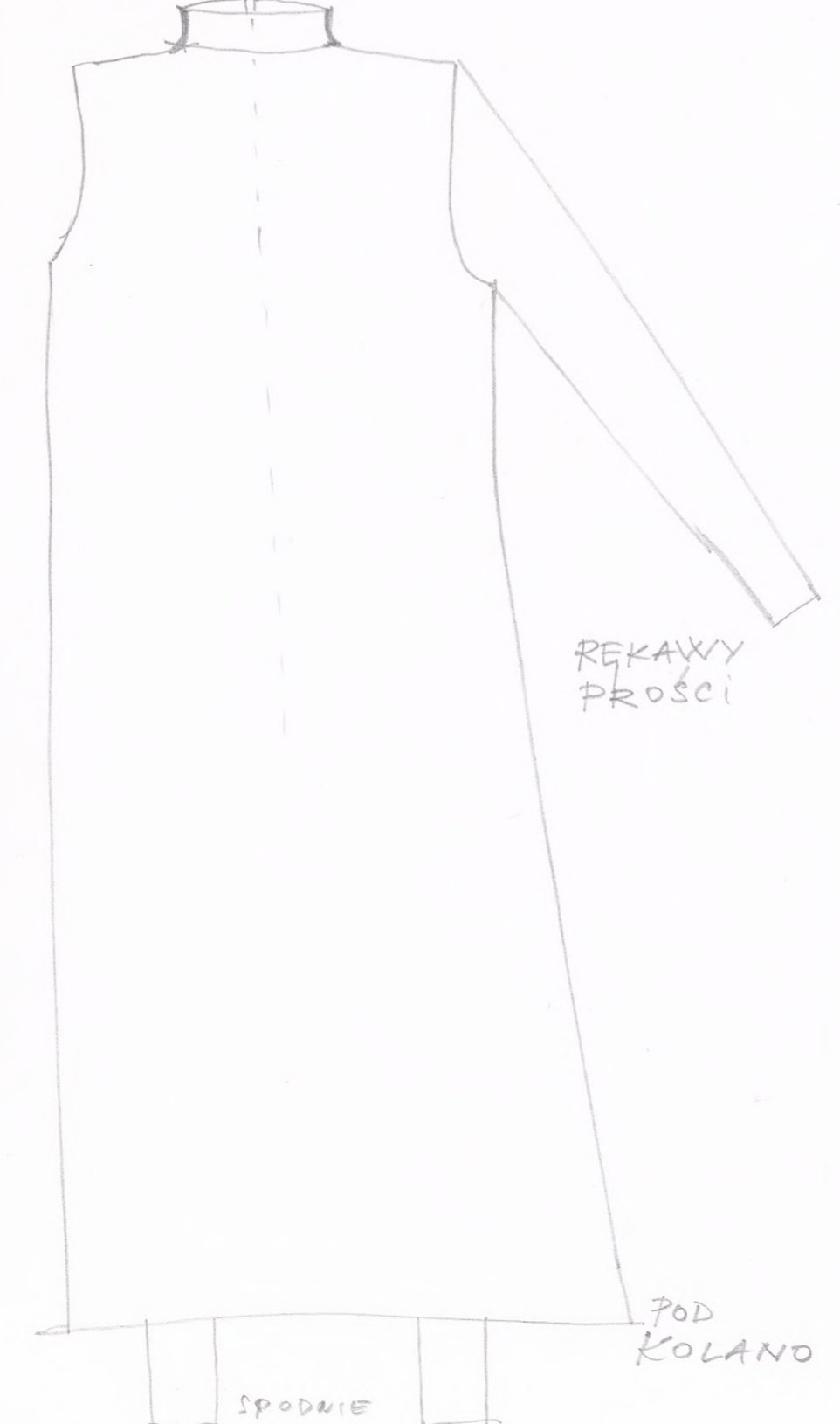


SHYLOK



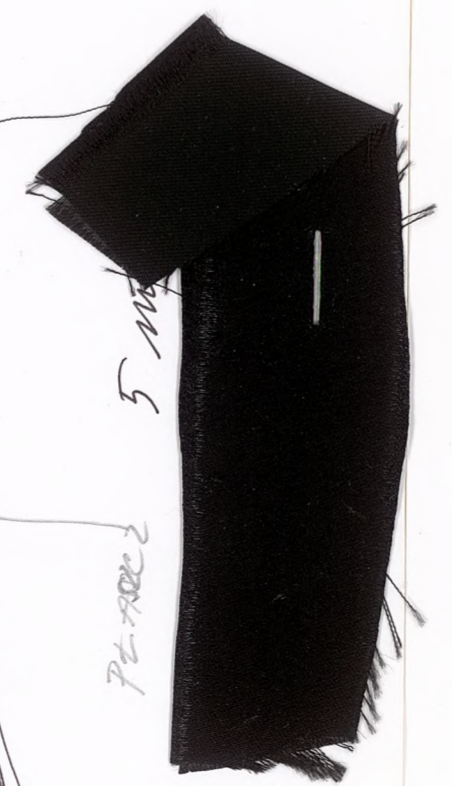
JAKO TUNIKA

PROŚCI KOLNIERZ



REKAWY PROŚCI

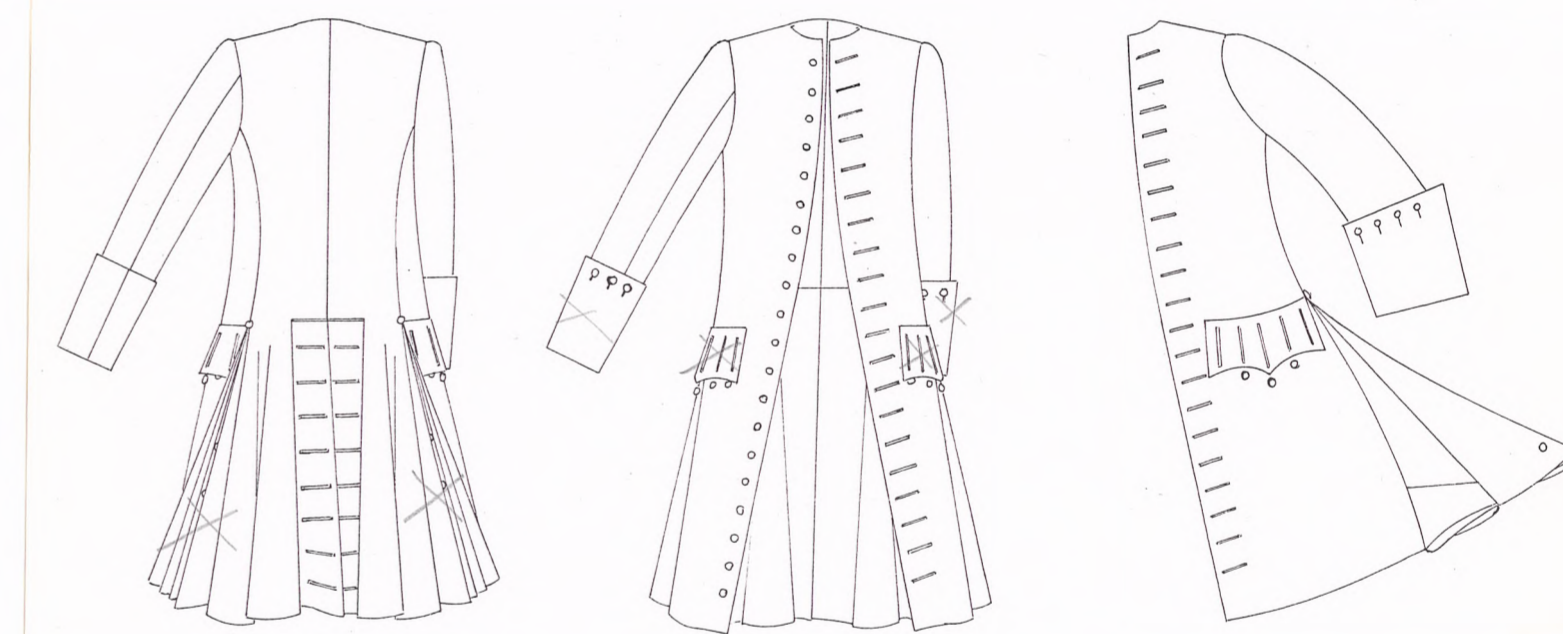
POD KOLANO



SPODNIE

PLEATS

PŁAŚCZ BARDZO PROŚCI



BACK OF COAT VERY SIMPLE CUT, TO AS FRONT SITE

NE MANKIETY

SOFTLY ROUNDED side pleats on the skirts of this superb cloth coat of the 1750s to 1760s are quite full and have been interlined so that they hang in heavy folds. The detail shows the left-hand side pleats. This is a formal day coat which forms part of a three-piece suit with matching waistcoat and breeches made of superfine wool with a felted finish. It is complete with original silver-gilt buttons.

The fashion of the 1740s for extravagant full-skirted coats made with stiff interlinings, which can be seen in the previous example, had declined by the 1750s and 1760s. The pleats of this coat flank the open seams which extend from hip to hem on each side of the coat, and are partially closed by a pair of button stays. The origin of the open seams in men's coats has

already been mentioned, but they also served another purpose relating to the fact that in the 18th century all gentlemen were entitled to carry a sword. The side vents allowed the sword to pass through the coat without damaging the garment. Stays prevented the sword from swinging about and also controlled the movement of the skirts.

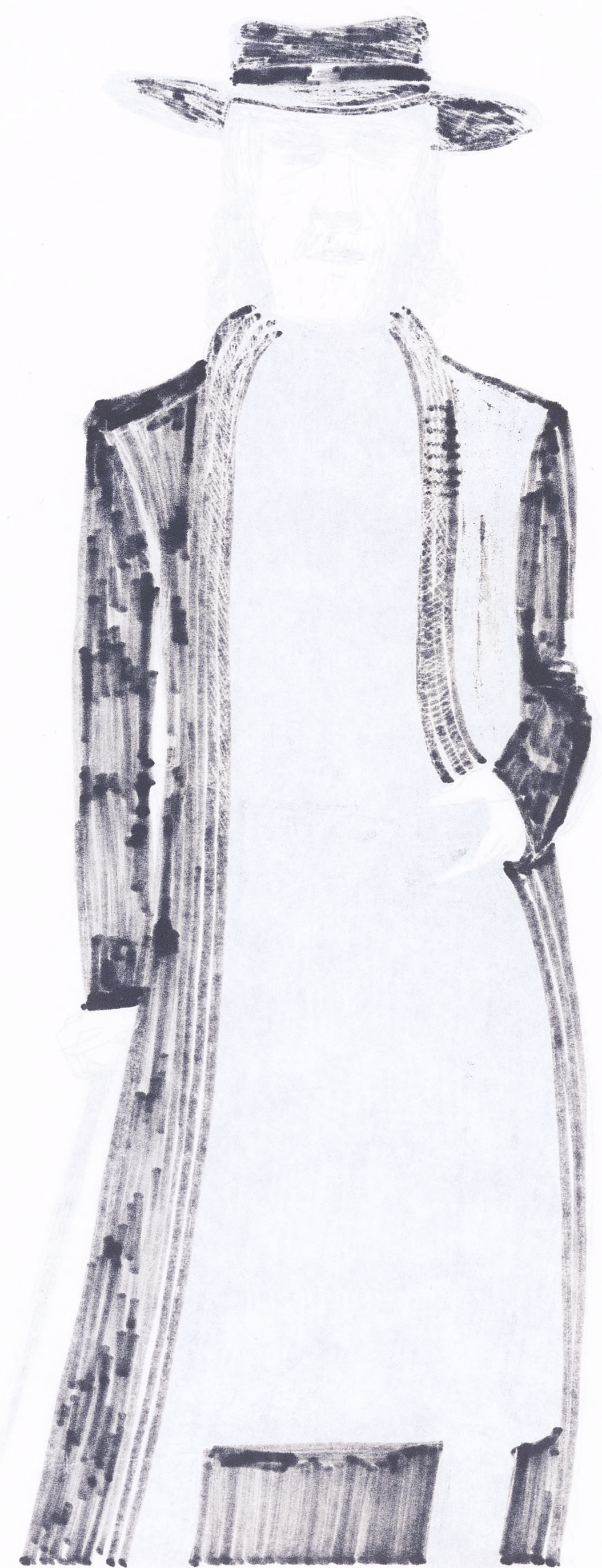
The suit is good-quality formal day wear. An elegant, understated ensemble, the only decorative highlights are the gleaming buttons. This was typical dress for an English gentleman of the period and epitomises the English taste for quality without ostentation.

For more details about this coat, see p.84.

A man's formal day coat of felted wool with silver-gilt buttons. English, 1750s-1760s T.329-1985

1A

SHIRAZ



1B



1C



*[Faint, illegible text, likely bleed-through from the reverse side of the page.]*